



0330 606 1410  
info@tlb.properties  
tlb.properties

Residential | Retail | Commercial  
The perfect space for you.



3B Rex Corner



## 3B Rex Corner

Retail unit to let

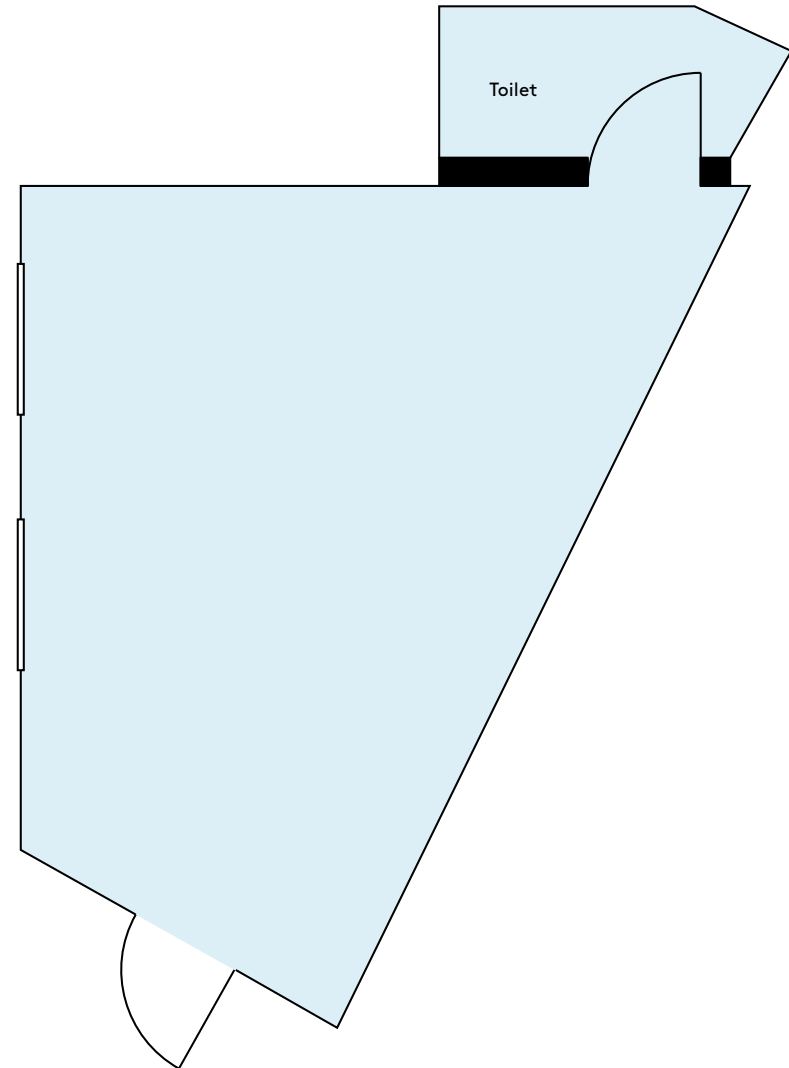
£250 per month  
Minimum term: 6 months

Prominent corner retail unit  
on an established parade.

Visible from the busy Wheatley  
Hall Road and close to a new Aldi  
supermarket, Doncaster town  
centre and local transport links.

3B Rex Corner  
Broxholme Lane  
Doncaster DN1 2LP

- Suitable for A1/A2 uses
- On-road parking adjacent
- Prominent site on a  
busy thoroughfare
- Walking distance from  
Doncaster town centre
- Close to main road/  
bus routes and  
Doncaster Rail Station



All prices are subject to VAT. Text, plans and images are for guidance only.  
Plans are not to scale and any dimensions, areas or distances given are approximate.