

Cavendish Court

Large clinic unit to let
1C Cavendish Court

Cavendish Court
South Parade
Doncaster DN1 2DJ



Large clinic unit ideal for health, beauty and aesthetic treatment businesses.

Close to Doncaster city centre, the unit sits at the front of Cavendish Court, a well established mixed-use development comprising of office, retail and health and beauty space, including Doncaster's Same Day Health Centre.

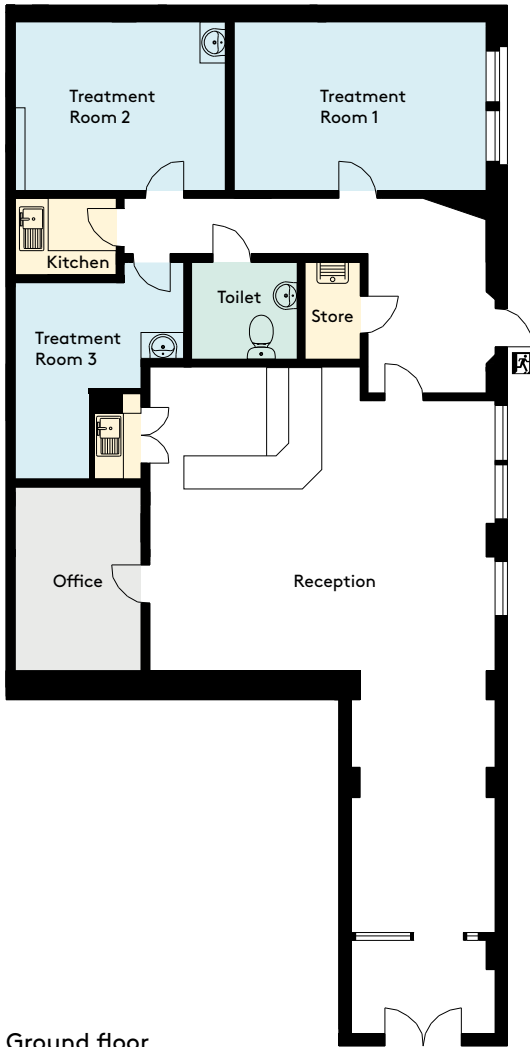
There are excellent transport links and on-site pay and display parking.

- Prominent unit at the front of Cavendish Court
- Large reception/waiting area with individual treatment rooms
- The option for open or intercom only access
- Close to main road/ bus routes and Doncaster Rail Station



0330 606 1410 | info@tlb.properties | tlb.properties

Residential | Retail | Commercial | The perfect space for you.



Ground floor

Building	Size (sq ft)	3 year £/year
----------	--------------	---------------

1C	1,130	£16,800
----	-------	---------

Service charge: £1,007.88 per annum

Available immediately

Deposit: £2,500

Rateable value: £6,700

All prices are subject to VAT.

Utilities, buildings insurance, business rates and parking are not included. Legal fees apply.

Text, plans and images are for guidance only.

Plans are not to scale and any dimensions, areas or distances given are approximate.